

LIGHTING CONTROLS

PIR WALL/CEILING OCCUPANCY & LIGHT SENSORS

LX-100



DESCRIPTION

The **Kele Model LX-100** Wall-/Corner-Mount passive infrared (PIR) occupancy sensor controls lighting and HVAC equipment. This device can control equipment directly through a BAS with the SPDT isolated relay built into the sensors.

FEATURES

- **Passive infrared technology**
- **Advanced PIR technology**
- **Adjustable time delay**
- **Adjustable unit sensitivity**
- **Contains isolated SPDT relay**
- **LED indicator**



LX-100

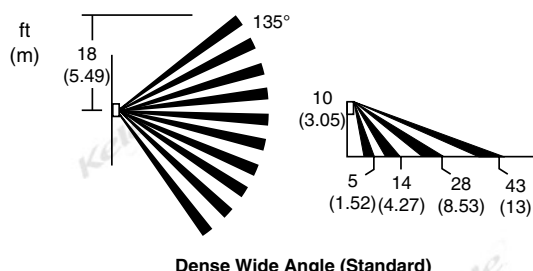
Kele



SPECIFICATIONS

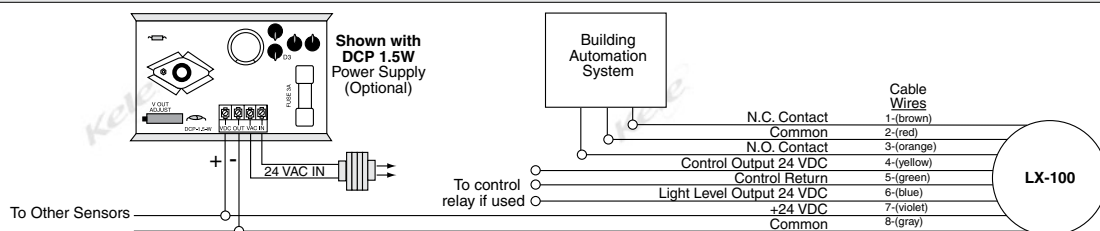
Supply Voltage	24 VDC, $\pm 10\%$, 20mA	OFF Delay Time (TD)	Selectable, 30s, to 30m
Contact Rating	90 second power warm up SPDT, 1A @ 24V (AC/DC), 0.5A @ 120VAC	Indication	Red LED (ON with motion)
Light Output	Adjustable 1–186 fc to initiate a 24VDC output	Mounting	Wall or Ceiling with swivel bracket
Technology	Passive infra-Red (PIR) with Fresnel lens	Color	White
Occupied Mode (OCC)	Occupied-Auto ON with Time Delay OFF	Operating Temperature	32° to 98°F (0° to 36°C)
Approx. Coverage Path	Semi circle wedge 135 degrees, out to 43'(13.11m)	Wiring	8 Pig tails
Sensitivity	Adjustable High to Low	Enclosure Rating	Indoor, no rating
Override	DIP switch 5 (ON = Relay ON & light level CTRL disabled)	Dimensions	3.38"L x 3.35"W x 2.05"D (8.6 x 8.5 x 5.2 cm)
		Weight	1.0 lb (0.46 Kg)
		Approvals	RoHS
		Warranty	5 years

COVERAGE PATTERNS



The **LX-100** uses Passive infrared technology to detect occupancy. Detection occurs when the unit senses the difference between infrared emissions from a human body and the background space. Operation occurs by sending a low-voltage signal and energizing the SPDT relay when a person enters the controlled area. **LX-100** has an adjustable time delay for turning the lights off when no occupancy is detected, and adjustable sensitivity setting. **LX-100** contains an adjustable light-level sensor for controlling lighting based on ambient light level. This feature is wired to an independent voltage output at set point and has no involvement with the occupancy relay output.

WIRING



ORDERING INFORMATION

MODEL
LX-100

DESCRIPTION

Wall/Ceiling PIR occupancy sensor with SPDT contact, light signal output and swivel mounting bracket

DCP-1.5-W

RELATED PRODUCTS

Power supply, 24 VAC IN to 24 VDC OUT